

## 375X375um Homogenized Fiber Optic Connector



### ● Product Description

Homogenized fiber has unique spot homogenization and disturbance characteristics. When Gaussian-distributed laser is input, it can obtain a flat-top spot with uniform energy distribution after passing through square/rectangular/octagonal optical fiber. At the same time, the coupling efficiency is also higher than that of circular optical fiber. It is an ideal optical fiber for precision laser processing (welding, cutting, marking),

astronomical observation, night vision monitoring, laser biological detection and other application fields. This product link is the related model of homogenized bare optical fiber + connector jumper

## ● Product features

Uniform energy distribution 、 high damage threshold 、 Large core energy fiber

## ● Part Number

MP-REV-S375-SMA/FC

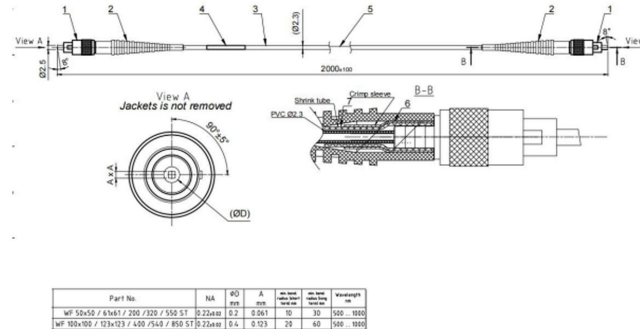
## ● Application area

Optical application experiments 、 Laser transmission

## ● Core parameters

Fiber Type	Connector Type
375x375um	SMA/FC-SMA/FC/SMA905

## ● Dimension Drawing



## ● General Parameters

### Technical Parameters

parameter	index
Fiber Type	WU375*375um ,310X310um , 600X600um
length	$L \leq 1m$ tolerance: $\pm 10mm$ $1m < L \leq 3m$ tolerance: $\pm 15mm$ $3m < L \leq 5m$ Tolerance: $\pm 30mm$ $5m < L$ tolerance : $\pm 30mm$
Connector Type	SMA/FC-SMA/FC/SMA905

### Test diagram

