

4.0um high power benchtop FP-QCL mid-infrared quantum cascade laser 250mW (TDLAS integrated control module)



● Product Description

The 4.0um high-power benchtop FP-QCL quantum cascade laser is a continuous light laser developed by Idealphotonics. It has a relatively high output optical power and a collimated output power of several hundred milliwatts, which can meet the light source conditions for mid-infrared testing. In addition, the benchtop FP-QCL laser module integrates a driver and temperature control module, and can also use software to control the

temperature and operating current of the tuned laser, which can make the laser work stably and maintain the accuracy of the measured values.

- **Product features**

Low power consumption, high power、 High side mode suppression ratio 、 Intelligent software control、 Small structure

- **Part Number**

MP-TDLAS-MIR-QCL-W4000-1-FP-0250

- **Application area**

Mid-infrared test light source、 Mid-infrared device analysis、 Mid-infrared system light source

- **Core parameters**

Wavelength	Output Power	Spectral Width
4.0um	250mW	8nm

- **General Parameters**

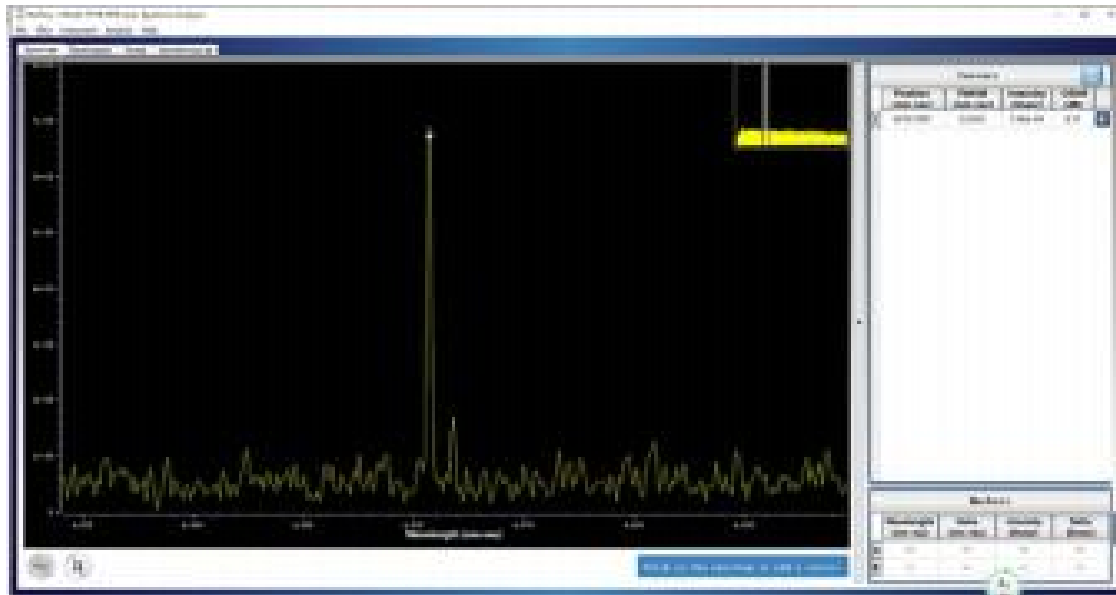
Tuning characteristics

Parameters	Unit	Technical Specification



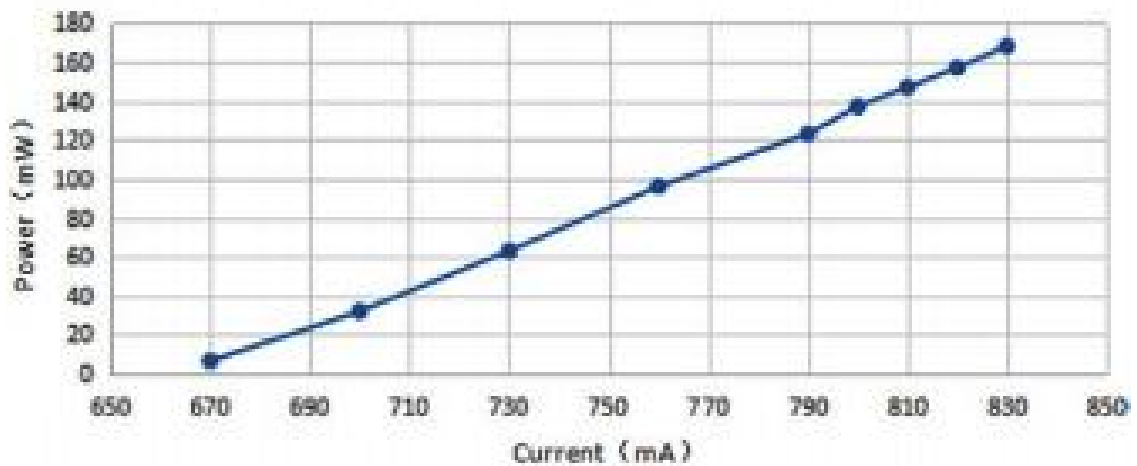
		Min.	Typ.	Max.
Laser collimated output power	mW		250	280
Peak operating wavelength	um	4	4.05	4.1
Spectral width (FWHM)	nm		8	
Output side mode suppression ratio (SMSR)	dB	30		
Output isolation	dB		30	
Wavelength temperature coefficient	nm/°C		0.6	
Wavelength current coefficient	nm/mA		0.2	
Output power stability (8 hours)	%		±1	±4
Output power adjustable range	%	0		100
TEC (Thermoelectric cooler) operating range	°C	0		50
Operating voltage	VAC	100	220	240
Operating temperature	°C	0		55
Storage temperature	°C	-20		65
Dimensions	mm	343(L) × 193(W) × 180(H) Benchtop		

Laser Spectrum (Continuous)

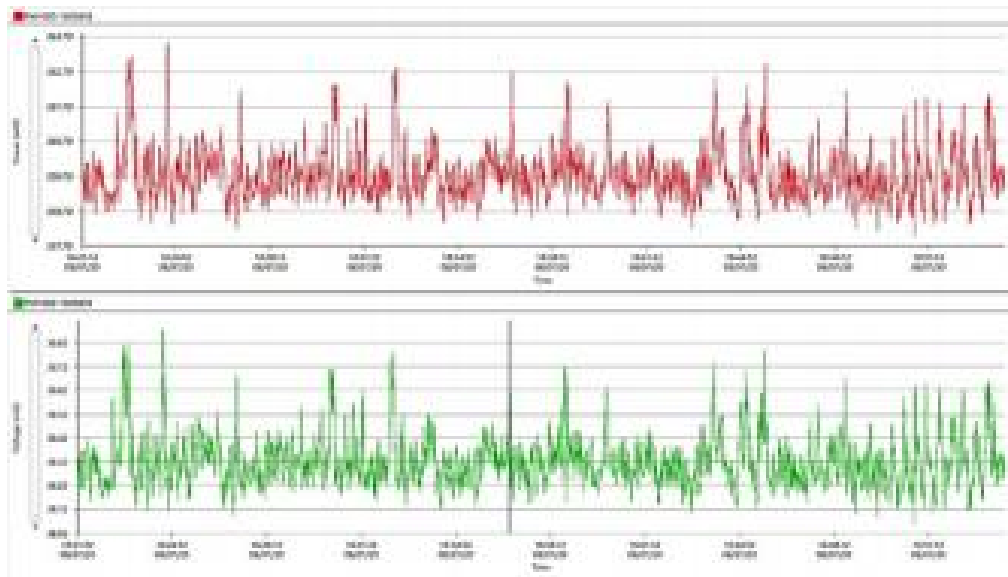


QCL Laser Characteristic Curve (Typical Wavelength 4.0um) Output Power Characteristic Curve

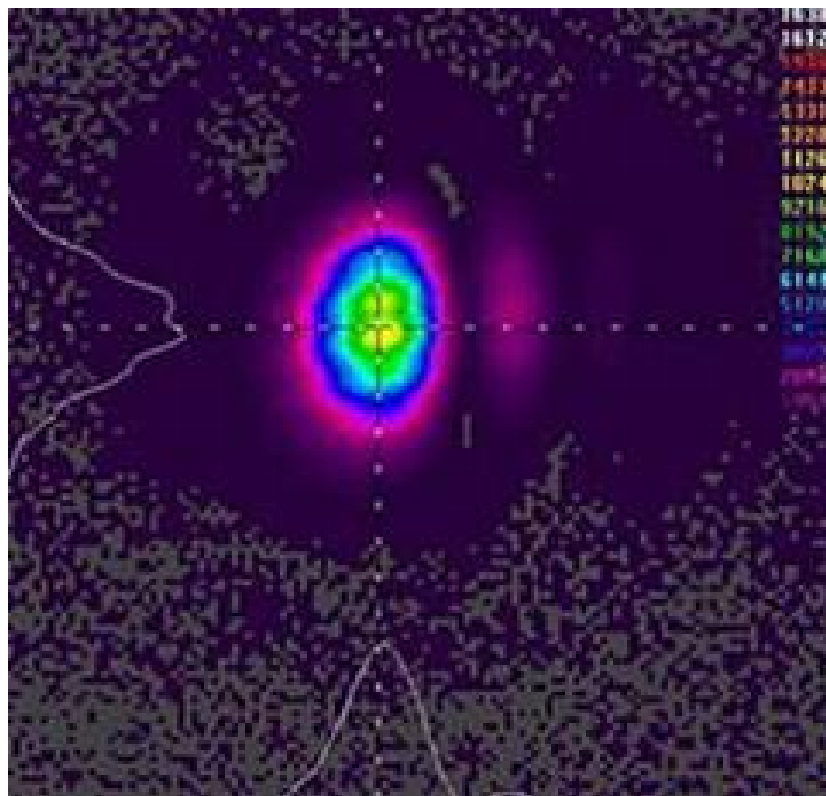
P-I tuning Curve



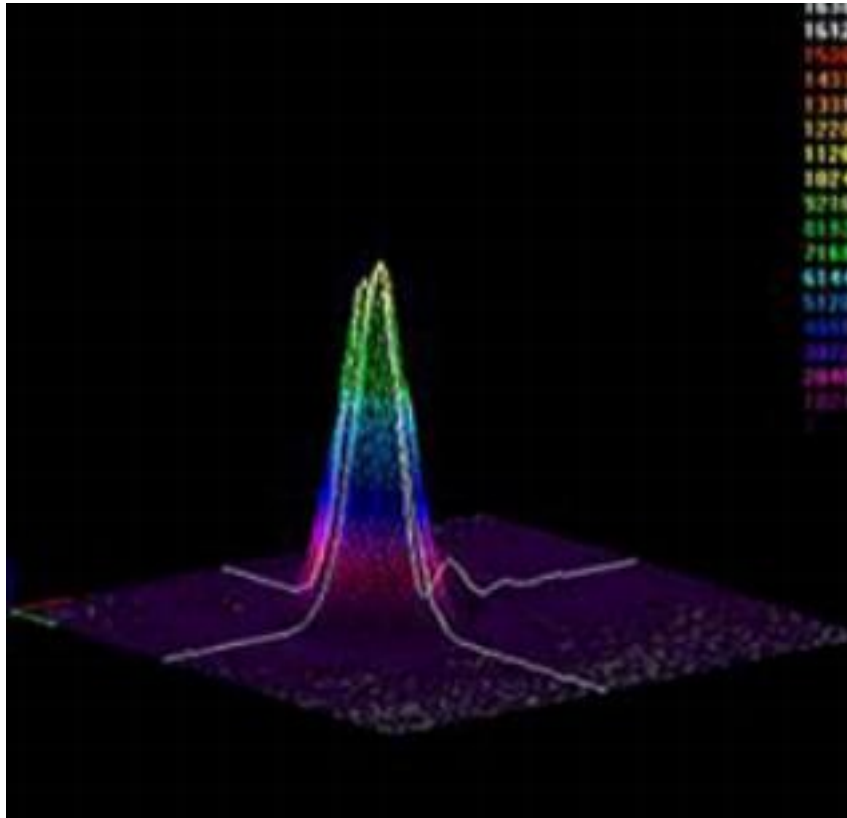
Power Stability of 4.0um FP-QCL Laser



Spot analysis

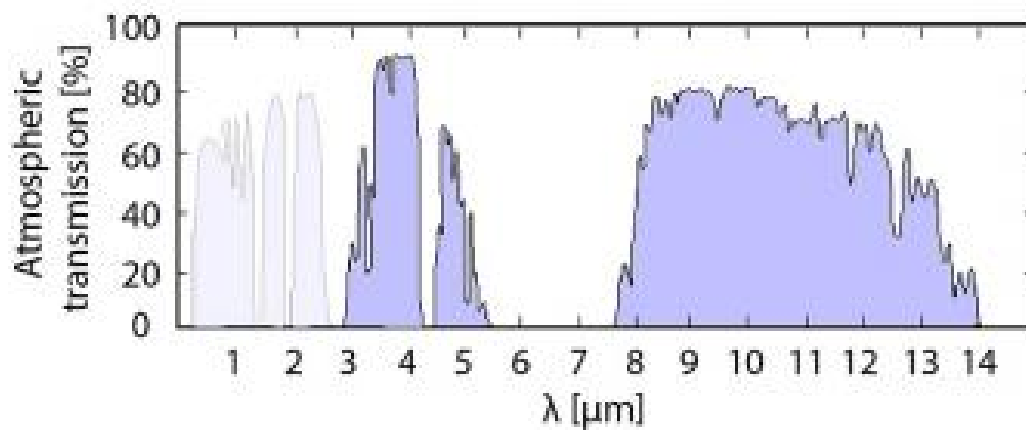


2-D Beam Profile at 1524.0 mm (60.0 in)



3-D Beam Profile at 1524.0 mm (60.0 in)

Mid-infrared atmospheric window





PN#/Ordering info

MP-QCL- W□□□□ -☆-△-XX

W□□□□: Wavelength

4000:4000nm

4600:4600nm

9000:9000nm

☆: Collimated output

1: With

0: Without

△: Laser type

FP:QCL-FP

DFB:QCL-DFB

XX: Output power

001=1mw

010=10mw

250=250mw

400=400mw

1000=1000mw

CW Distributed Feedback (DFB) Quantum Cascade Laser

* Center wavelength measured at T = 15°C under continuous wave



* Center wavelength tuning range: +/- 0.03 μm

* Other center wavelengths are listed in the table +/- 100 nm We can provide screening

services

* Other center wavelengths can be customized, minimum order quantity: 5 pieces

The wavelengths we can currently provide are as follows*

Wavele ngth(μ m)	Wave number (cm^{-1})	Outpu t power (mW)	Wavele ngth(μ m)	Wave number (cm^{-1})	Outpu t power (mW)	Wavele ngth(μ m)	Wave number (cm^{-1})	Outpu t power (mW)
4.22	2370	> 50	6.25	1600	> 100	9.38	1066	> 100
4.28	2336	> 50	7.15	1399	> 100	9.47	1056	> 150
4.32	2315	> 50	7.26	1377	> 100	9.49	1054	> 150
4.34	2304	> 50	7.32	1366	> 100	9.52	1050	> 200
4.45	2247	> 80	7.37	1357	> 100	9.56	1046	> 200
4.48	2232	> 80	7.43	1346	> 150	9.63	1038	> 150
4.53	2208	> 150	7.57	1321	> 150	9.66	1035	> 100
4.56	2193	> 150	7.61	1314	> 150	9.68	1033	> 100
4.59	2179	> 150	7.75	1290	> 300	9.72	1029	> 100
4.61	2169	> 100	7.78	1285	> 300	9.95	1005	> 100
4.72	2119	> 100	7.80	1282	> 300	10.24	977	> 150
5.18	1931	> 150	7.82	1279	> 300	10.26	975	> 150



5.26	1901	> 150	7.85	1274	> 300	10.28	973	> 150
5.66	1767	> 300	8.01	1248	> 100	10.32	969	> 150
5.73	1745	> 150	8.28	1208	> 200	10.36	965	> 150
6.13	1631	> 150	9.02	1109	> 100	10.54	949	> 100
6.15	1626	> 150	9.05	1105	> 100	10.60	943	> 80
6.18	1618	> 100	9.26	1080	> 100	10.63	941	> 80

Pulsed Distributed Feedback (DFB) Quantum cascade lasers

Wavelength (μm)	Wave number (cm ⁻¹)	Output power (mW)	Wavelength (μm)	Wave number (cm ⁻¹)	Output power (mW)	Wavelength (μm)	Wave number (cm ⁻¹)	Output power (mW)	Wavelength (μm)	Wave number (cm ⁻¹)	Output power (mW)
3.399	2942	4.453	2245	5.193	1925	6.135	1629	7.788	1284	9.489	1053
3.402	2939	4.457	2243	5.214	1917	6.143	1627	7.795	1282	9.509	1051
3.45	2898	4.461	2241	5.224	1914	6.153	1625	7.809	1280	9.529	1049



3.45 1	2897	4.46 5	2239	5.23 3	191 0	6.15 6	1624	7.81 9	1278	9.54 4	104 7
3.47 7	2876	4.47 1	2236	5.24	190 8	6.17	1620	7.83 1	1276	9.58 6	104 3
3.48	2873	4.47 5	2234	5.24 4	190 6	6.17 7	1618	7.85 7	1272	9.59 8	104 1
3.49 7	2859	4.47 9	2232	5.25	190 4	6.21 4	1609	7.86 9	1270	9.62 3	103 9
3.51 9	2841	4.48 3	2230	5.25 5	190 2	6.22 5	1606	7.88 7	1267	9.63 4	103 7
3.53 6	2828	4.48 5	2229	5.26 1	190 0	6.22 8	1605	7.90 6	1264	9.65 5	103 5
3.53 8	2826	4.48 9	2227	5.26 4	189 9	6.24 2	1602	7.93 3	1260	9.67 2	103 3
3.54 6	2820	4.49 2	2226	5.26 6	189 8	6.24 3	1601	7.98 6	1252	9.69 2	103 1
3.54 9	2817	4.49 8	2223	5.27 2	189 6	6.25 8	1597	7.99 8	1250	9.72	102 8
3.56 6	2804	4.50 1	2221	5.27 9	189 4	6.26 2	1596	8.01 6	1247	9.74 4	102 6
3.56 8	2802	4.50 6	2219	5.28 9	189 0	7.14 8	1398	8.02 6	1245	9.90 3	100 9



3.60 5	2773	4.50 9	2217	5.29 4	188 8	7.16 4	1395	8.05 4	1241	9.92 1	100 7
3.60 7	2772	4.51 3	2215	5.30 4	188 5	7.17 6	1393	8.10 1	1234	9.94 3	100 5
3.65 5	2735	4.51 7	2213	5.30 6	188 4	7.18 5	1391	8.16 3	1225	9.96 4	100 3
3.72 4	2685	4.52 1	2211	5.45 2	183 4	7.19 5	1389	8.22	1216	9.98 3	100 1
4.18 4	2390	4.52 5	2209	5.48 6	182 2	7.20 5	1387	8.24 2	1213	10.0 01	999
4.18 5	2389	4.52 9	2207	5.52 3	181 0	7.21 7	1385	8.25 2	1211	10.0 29	997
4.18 8	2387	4.53 4	2205	5.55 7	179 9	7.22 9	1383	8.26 5	1209	10.0 42	995
4.19 4	2384	4.53 8	2203	5.59 2	178 8	7.25 8	1377	8.28 2	1207	10.0 63	993
4.19 7	2382	4.54 3	2201	5.61 2	178 1	7.26 8	1375	8.29 2	1205	10.1 9	981
4.2 4	2380	4.54 5	2200	5.62 6	177 7	7.28 5	1372	8.30 1	1204	10.2 06	979
4.20 4	2378	4.55	2197	5.63 2	177 5	7.28 9	1371	8.32 6	1201	10.2 38	976



4.20 7	2376	4.55 4	2195	5.63 9	177 3	7.32 7	1364	8.33 5	1199	10.2 59	974
4.21 5	2372	4.56	2192	5.64 6	177 1	7.33 7	1362	8.35 2	1197	10.2 89	971
4.21 9	2370	4.56 5	2190	5.65 1	176 9	7.34 8	1360	8.38 6	1192	10.3 27	968
4.22 1	2369	4.56 9	2188	5.65 7	176 7	7.35 4	1359	8.90 2	1123	10.3 42	966
4.22 6	2366	4.57 4	2186	5.66 5	176 5	7.36 7	1357	8.94 8	1117	10.3 77	963
4.23 1	2363	4.57 7	2184	5.66 9	176 3	7.37 3	1356	9.00 4	1110	10.3 96	961