



1950nm single mode fiber optic connector/patch cord



● Product Description

Fiber optic patch cords (also known as fiber optic connectors) are optical cables with connector plugs installed on both ends to achieve active connection of the optical path. Idealphotonics Photonics' fiber optic patch cords have high-quality, narrow-pin ceramic FC/APC connectors on both ends. Produced by our equipment, each patch cord is individually tested at the test wavelength listed in the specification label to ensure the extinction ratio and low back reflection (return loss) when connecting fibers. These



patch cords are in stock and have high-quality polishing to ensure a typical return loss of more than 60 dB.

● Product features

Typical 60 dB return loss、 Ceramic ferrule, angled 8° (APC)、 Ø3 mm outer shield、 Custom patch cords available

● Part Number

MP-FOJ-1950-2-1-SA

● Application area

Fiber optic communication system、 Fiber optic access network、 Fiber optic data transmission、 Fiber optic CATV、 Local area network (LAN)、 Test equipment、 Fiber optic sensor

● Core parameters

Operating Wavelength	Fiber Type
1750-2100nm	SM1950

● General Parameters

Parameters



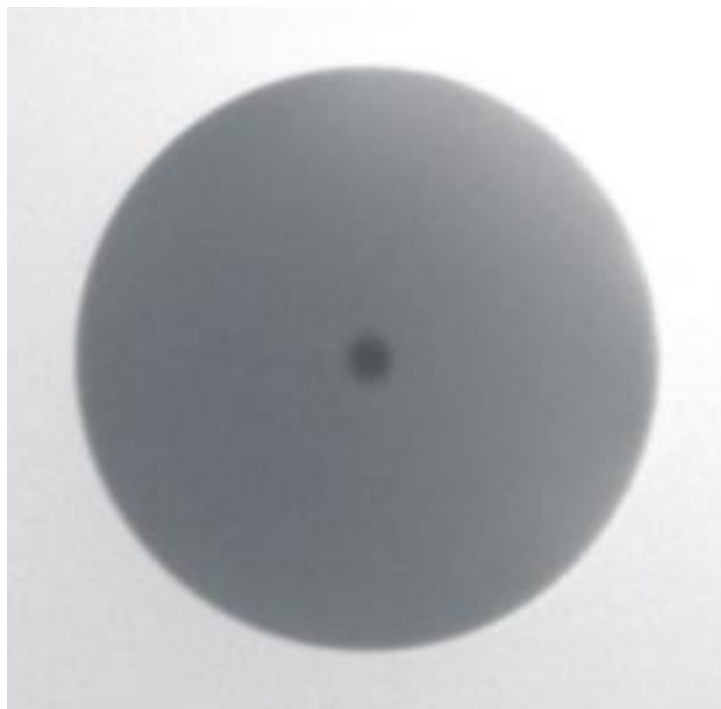
PN#	MP-FOJ-4 05-2-1-SA	MP-FOJ-63 3-2-1-SA	MP-FOJ-7 80-2-1-SA	MP-FOJ-10 60-2-1-SA	MP-FOJ-1 310/1550- 2-1-SA	MP-FOJ-1 950-2-1-S A
Test wavelength	405 nm	630nm	780nm	1060nm	1550nm	1950nm
Operating wavelength	400 - 680nm	620 - 850nm	770 - 1100nm	970 - 1550nm	1270 - 1625nm	1750 - 2100nm
Cut-off wavelength	380 ± 20nm	570 ± 50nm	720 ± 50nm	920 ± 50nm	1200 ± 70nm	1620 ± 80nm
Fiber type	SM 405	SM630nm	HI780	HI1060	SMF - 28e	SM1950
Maximum insertion loss	1.5 dB	0.5 dB	0.5 dB	0.5dB	0.5dB	0.5dB
Mode field diameter	3.6± 0.5um @405nm	4.0 ± 0.4um @630nm	4.6± 0.5@780 nm	6.2±0.3 @1060 nm	10.4±0.5 @1550n m	8.6 um @1950 nm
Numerical aperture	0.12	0.13	0.14	0.14	0.14	0.14
Return loss	60 dB Typical					
Fiber connertor	FC/APC-FC/APC (FC/FC-FC/FC, FC/APC-FC/FC) optional					



Fiber length	1m (length can be customized)
Loose tube type	900um/2mm/3mm loose tube optional
Operating temperature	0 to 70 °C
Storage temperature	-45 to 85 °C

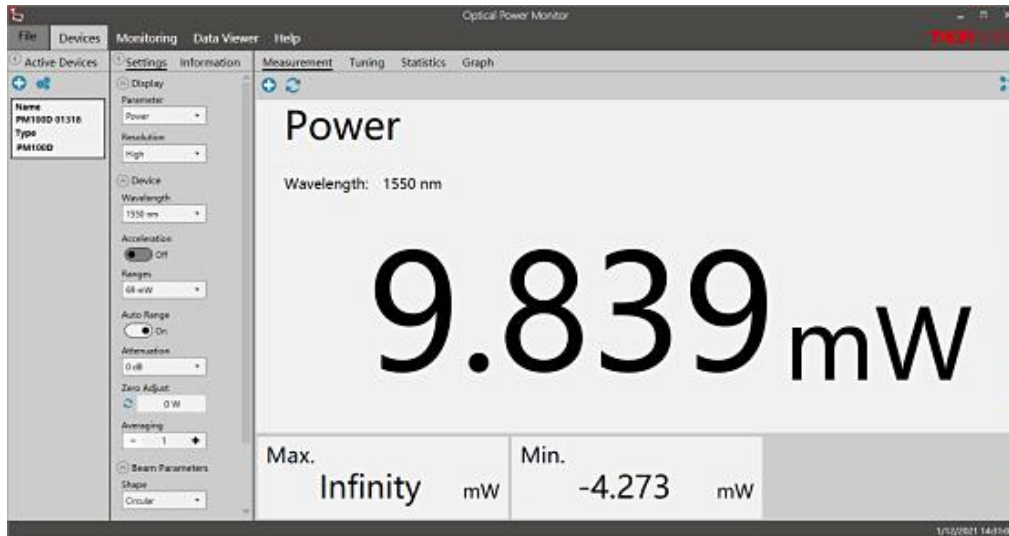
1550nm single mode fiber optic patch cord test

1. End face test

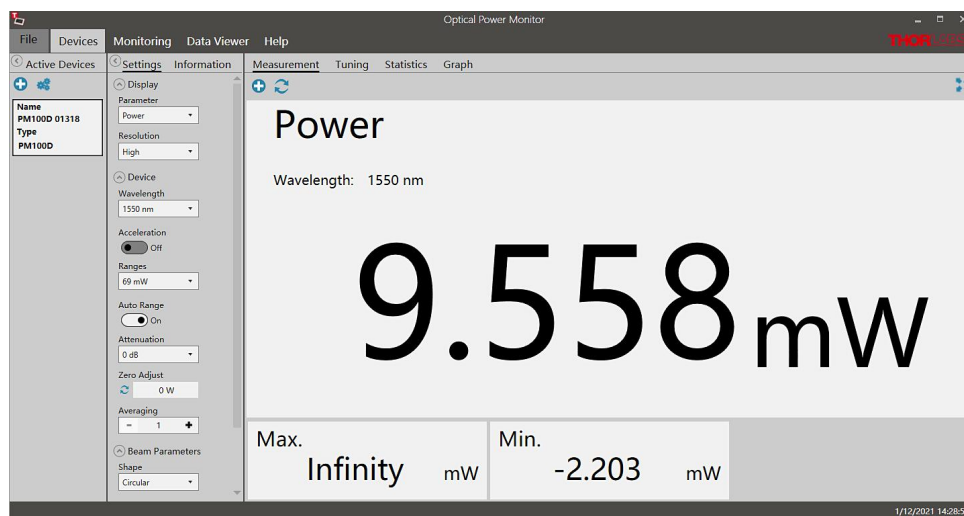




2. Insertion loss test



Laser power before connecting to fiber patch cord



Test the power after connecting the optical fiber patch cord

PN# and ordering

E.g.: MP-FOJ-633-2-1-SA

SM: Single mode

633: 633nm



2: 2mm loose tube

1: 1m

FC/APC: FC/APC connector