

915nm high power benchtop single mode pumped FBG wavelength stable light source



● Product Description

Our modular laser control is based on an advanced microprocessor control system, combined with high-precision ATC and ACC (APC) control circuits to achieve high stability of laser output, while ensuring that the light source is quick and intuitive to operate. We can also provide corresponding communication interfaces and control software according to user requirements to achieve computer control. This light source uses a one-key recovery function (Run/Stop button), which can effectively help customers return to the previous working state. This is a highly integrated modular

system light source, which uses PC-side software intelligent control. Customers can set the required working temperature and current according to their needs. It is very suitable for experimental scientific research and production testing. In addition, we need to modulate the laser for some application fields. We have connected two modulation ports, one for high frequency and one for low frequency, to better meet customers' needs for multiple uses of one machine.

● Product features

Support one-key restore function (no need to restart and preheat) 、
Software remote control, intelligent control 、 Stable output power,
continuously adjustable、 Compact structure、 High-precision ACC and ATC
control circuit、 Built-in high and low modulation bandwidth BNC interface

● Part Number

MP-FP-915-100-B-0-SA-FBG

● Application area

Laser sensor、 Pump source、 Test and measurement

● Core parameters

Center Wavelength	Output Power	Connector Type
915nm	100mW	FC/APC

● General Parameters

Driver parameters:

Characteristics	Min.	Max.	Unit	Note
Power supply voltage	100	230	VAC	Mains electricity
Power	5	20	W	
Laser drive current	0	128	mA	Patch cord optional
		266		
		590		
Laser drive voltage	0	3.1	V	@250mA
Response frequency	0	15	MHz	-3db
Temperature control range	0	5	°C	
TEC output current	-1.5	1.5	A	
TEC output voltage	-4.4	+4.4	V	
Analog input (low frequency)	-2.5	2.5	V	
Analog input (high frequency)	-2.5	2.5	V	
PD monitoring range	0	2	mA	

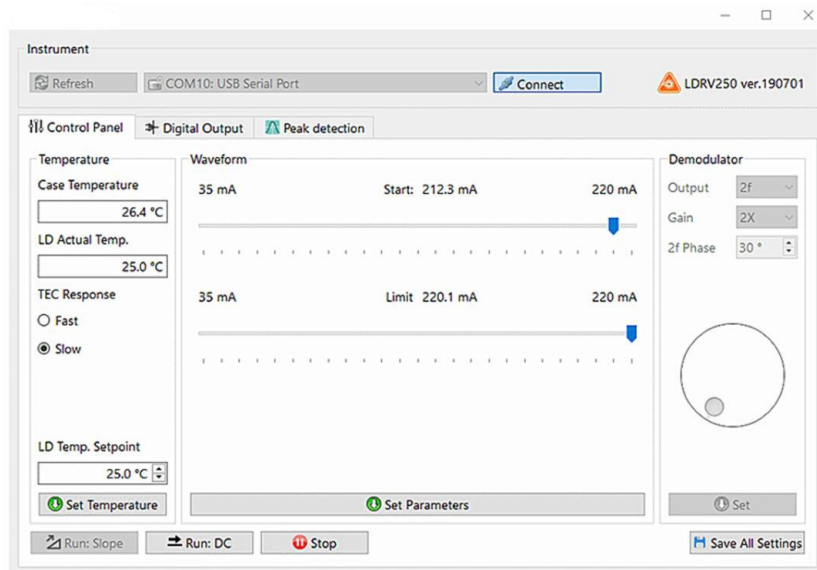
Laser parameters:

Parameters	Unit	Value
Laser wavelength	nm	910±1
Power	mW	100
FWHM	nm	0.42



Operating current	mA	500
Threshold current	mA	70
Operating voltage	v	1.6
Thermistor	Ω	10000

Control software interface:

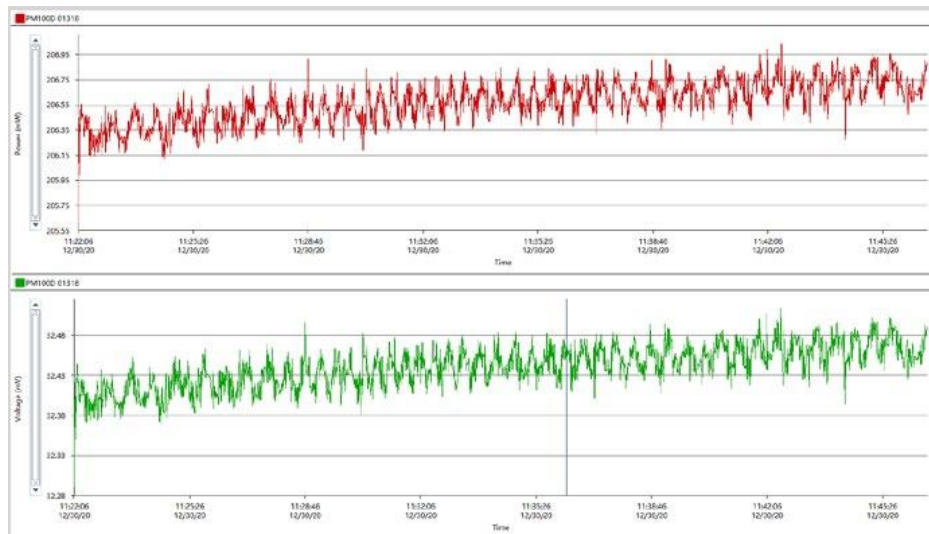


Spectrum:





Power stability curve:



Order Info:

MP-FP-915-100-B-0-SA-FBG

Working wavelength:

910: 910nm

915: 915nm