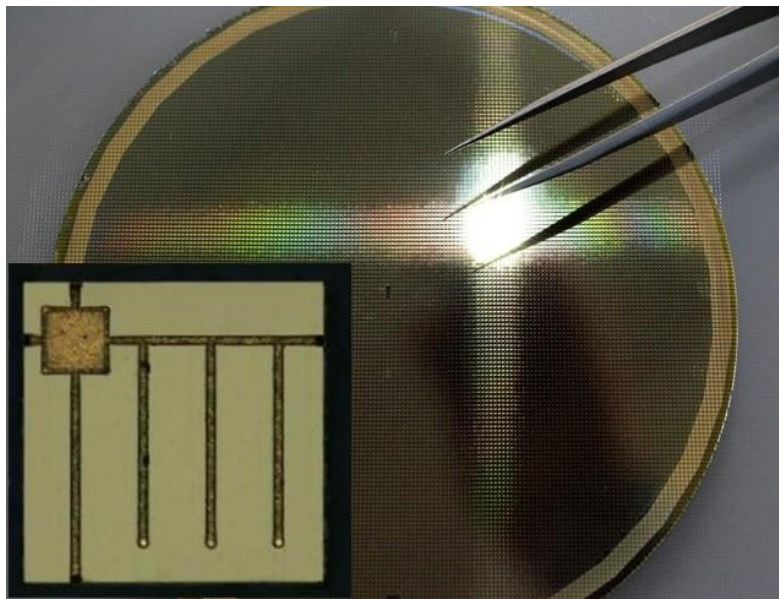


930nm 15mW RCLED Resonant Cavity LED

Diode



- **Product Description**

Resonant Cavity Light Emitting Diode. The InGaAs/AlGaAs chip operates at wavelengths of 930nm, 960nm, 1170nm, 1240nm, and 1270nm.

- **Product features**

Narrow spectral output; Highly directional beam; Low power consumption, high efficiency; Long lifetime; Low-cost manufacturing



● Part Number

MP-RCLED-930-15

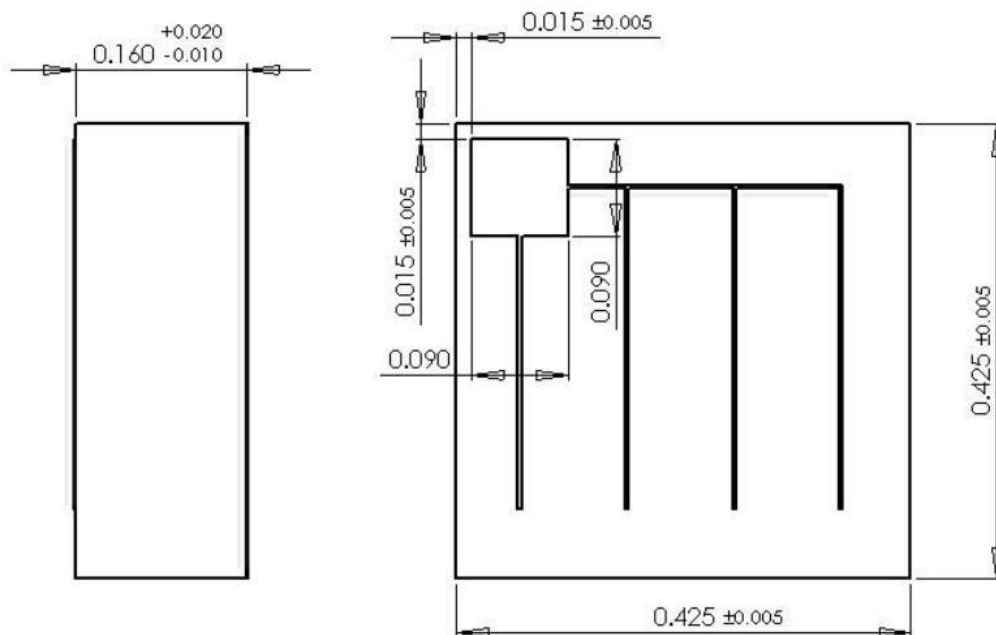
● Application area

Narrow spectral output; Highly directional beam; Low power consumption, high efficiency; Long lifetime; Low-cost manufacturing

● Core parameters

Center Wavelength	Output Power
930nm	15mW

● Dimension Drawing





● General Parameters

Model Specifications

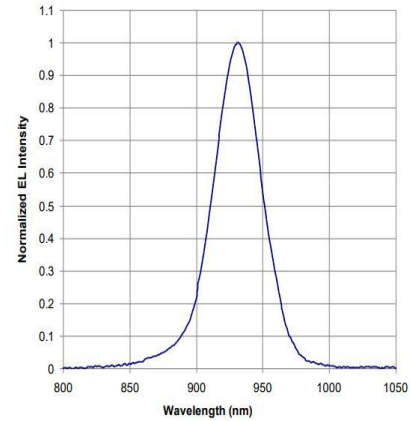
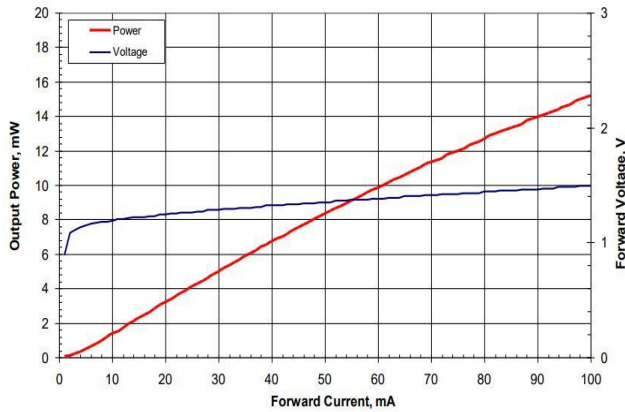
Test conditions: CW, operating temperature 25°C

Parameter	Symbol	Min.	Typical	Max.	Unit
Operating Current	I_{op}			200	mA
Operating Voltage	V_{op}		1.5	2.0	V
Reverse Voltage	V_{rev}			2.0	V
Optical Output Power@100mA	P_{out}	5	6*		mW
Center Wavelength	λ_c	955	960	965	nm
FWHW of Spectrum	$\Delta\lambda$	30	40	50	nm
Operating Temperature Range	T_{op}	15		60	°C
Chip Soldering Temperature (20sec)	T_{sol}			330	°C
*Up to 15mW available upon request					

Design:

P-side up; wire-bondable Au bond pad with current spreaders on top side;

back-side full (100%) area metallization, Au finished, solderable



Typical parameters of RCLEDs (Resonant Cavity Light Emitting Diodes)

Part number	Center Wavelength	Output Power	Bandwidth FWHM	Operating Current
	nm	mW	nm	mA
MP-RCLED-930-15	930	15	40	100
MP-RCLED-960-5	960	5*	40	100
MP-RCLED-1170-10	1170	10	40	100
MP-RCLED-1240-3	1240	3	40	100
MP-RCLED-1270-3	1270	3	40	100

*-15mW available upon request